



|           |                  |  |
|-----------|------------------|--|
| 11        | AAZ300858        | 237 FLEXIBLE HOSE DN6 M10 Ø10 R3/8 440mm                                       |
| 10        | AAZ305357        | TCR01 NUT THREAD TUBE Ø32  |
| 9         | AAZ304358        | CRF320 THREADED TAIL FIXATION WASHBASIN HIGH YPSILON Ø32 90mm                  |
| 8         | AAZ304485        | BJB01 (x1) GASKET BAG Ø44xØ38x2.5  |
| 7         | AAZ305358        | TP 3/8" (x2) WING NUT  |
| 6         | AAZ306280        | 1701C 1/2 HEADWORK 90° OPENING ANTI-CLOCKWISE Ø7.6 Z20 (RED)                   |
| 5         | AAZ306281        | 1702C 1/2 HEADWORK 90° OPENING CLOCKWISE Ø7.6 Z20 (BLUE)                       |
| 4         | 91Z307086        | 9191 HANDLE COVER CHROME FOR WASBASIN&SINK ADAGIO                              |
| 3         | 91Z307090        | 9150 SET HANDLE WHEEL CHROME CROSS+AXLE FOR BASIN, SINK AND SHELF BASIN ADAGIO |
| 2         | AAZ307196        | 1621 AERATOR CACHÉ-HC-TT-m M16,5x1 PCA 5 l/min                                 |
| 1         | 91Z307104        | C9101 SET WASHBASIN SPOUT CHROME Ø19 170mm FOR BASIN ADAGIO                    |
| <b>Nº</b> | <b>Reference</b> | <b>Denomination</b>  |

1

2

3

4

5

6

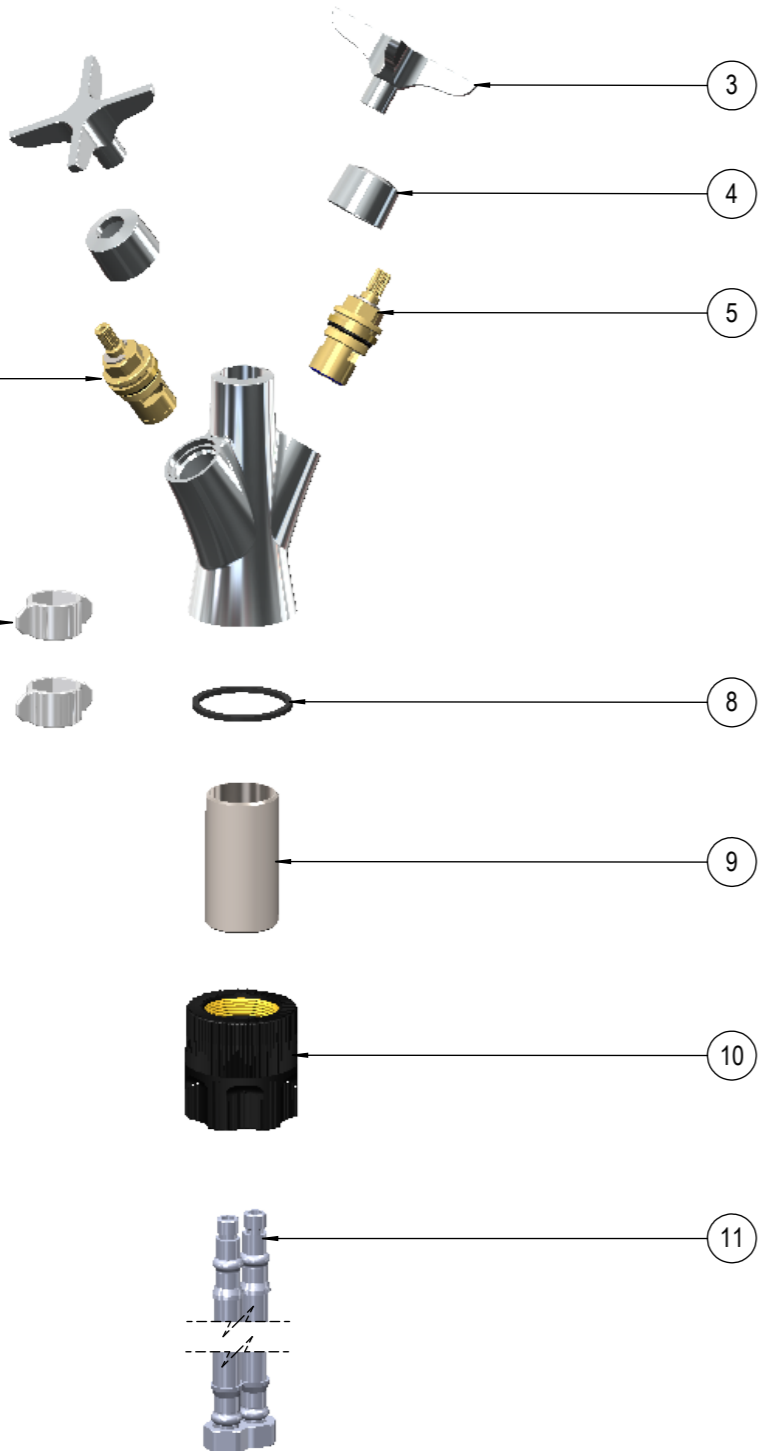
7

8

9

10

11



**Ramon Soler®**

**910101 CHROME BASIN ADAGIO  
SPOUT 170mm**

|                               |                               |                  |
|-------------------------------|-------------------------------|------------------|
| Drawn:<br><b>M. Squartini</b> | Approved:<br><b>J. Romero</b> | <b>91A306076</b> |
|-------------------------------|-------------------------------|------------------|