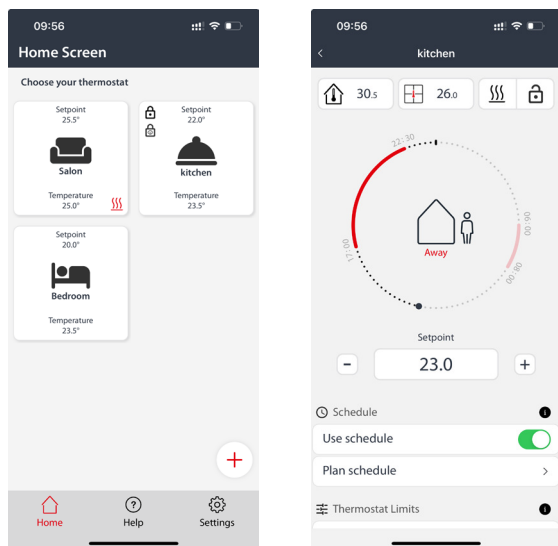


Make it easy, make it DEVI

The DEVI Control application enables the control of underfloor heating using Bluetooth technology when you are at home. Bluetooth technology makes it easy to program the **DEVIreg™ Room** or **DEVIreg™ Basic** thermostat from a distance up to 10 meters



Download from
Apple App store

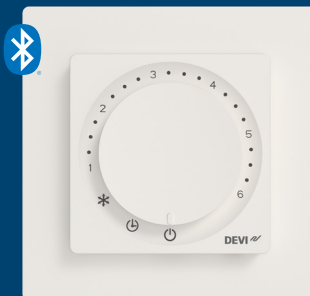


Download from
Google play store



DEVI 
by Danfoss

Make it easy,
make it DEVI



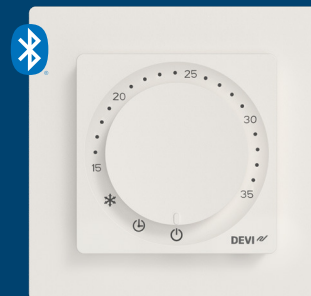
DEVIreg™ Basic

Modular 2-part construction

85 mm x 85 mm
x 20-24 mm

in-wall depth: 22 mm

EcoDesign



DEVIreg™ Room

Modular 2-part construction

85 mm x 85 mm
x 20-24 mm

in-wall depth: 22 mm

Option to choose the
front panel with R2.5 or R8

Possibility to use adaptors
for different frames
55 mm x 55 mm

EcoDesign



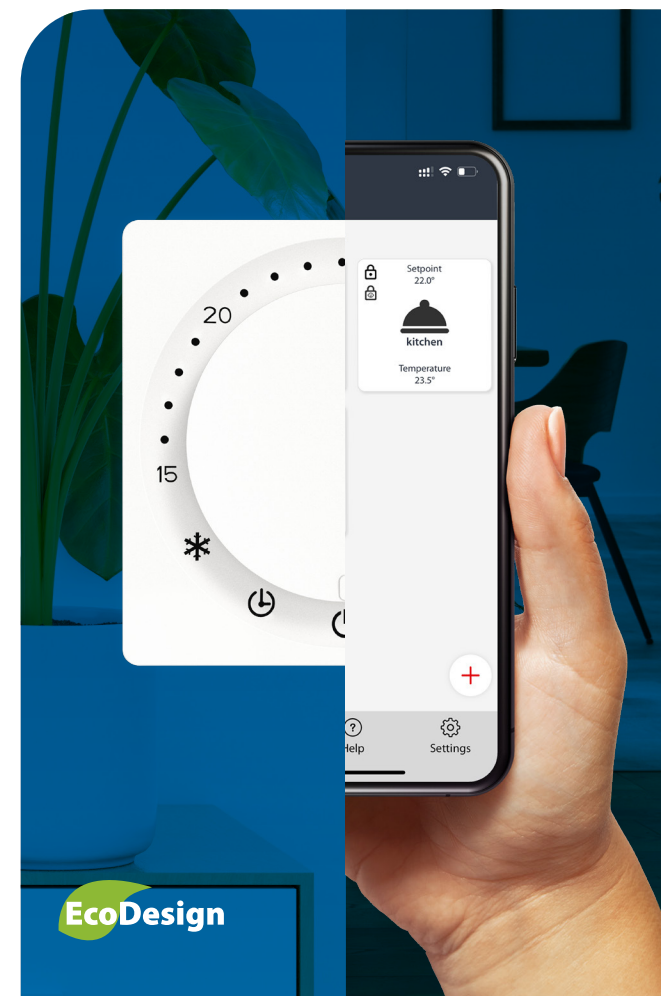
Watch the
How-to-Video
devicom

Perfect timing.

DEVIreg™ Basic
DEVIreg™ Room

DEVI 
by Danfoss

Make it easy,
make it DEVI



EcoDesign

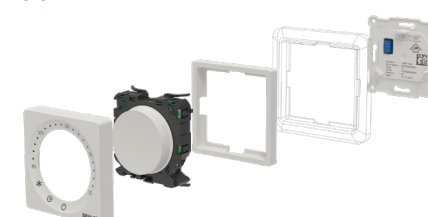
AD484038321180en-010101

2-year warranty

DEVIreg™ Basic



DEVIreg™ Room



Values and Benefits	Basic	Room
Combined, room or floor temperature control for comfort/ total/combined floor heating		X
Sensor adaptation		X
Battery backup		X
Control of electric floor heating elements according to the room temperature		X
Intuitive programmable timer thermostat	X	X
Complies with Eco design Lot 20	X	X
Control of electric floor heating elements	X	X
Fixed installation only	X	X
Fits a wide range of frames (55 mm x 55 mm) due to special 2-part construction	X	X
Dial for manual temperature setting, feature enabling and intuitive control	X	X
Fast and intuitive to setup using the in app wizard	X	X
Reduction of heating costs due to an energy saving program	X	X
Ensures desired floor temperature at the correct time	X	X
Floor temperature control for Comfort Heating	X	X

		DEVIreg™ Basic	DEVIreg™ Room
Technical Data	Dimensions	85 mm x 85 mm x 20-24 mm (depth of wall mounting: 22 mm)	86 mm x 85 mm x 20-24 mm (depth of wall mounting: 22 mm)
	Installation	fixed installation only	fixed installation only
	Weight	194 g	203 g
	Nominal Voltage	220 - 240 V AC 50/60 Hz	221 - 240 V AC 50/60 Hz
	Standby Power Consumption	max. 0,2 W	max. 0,2 W
	Max. Resistive Load	16A / 3680 W @ 230 V	16A / 3680 W @ 230 V
	Inductive Load	Cos = 0.3 max. 1A	Cos = 0.3 max. 1A
	Sensor Type / Compatible sensors	NTC 15 k @ 25 °C, 3 m (default)	NTC 15 kΩ @ 25 °C, 3 m. (default), NTC 2 kΩ @ 25 °C NTC 6.8 kΩ @ 25 °C, NTC 10 kΩ @ 25 °C, NTC 12 kΩ @ 25 °C, NTC 33 kΩ @ 25 °C, NTC 47 kΩ @ 25 °C
	Temperature Range	From 5 °C to +35 °C	From +5 °C to 35 °C (45 °C Floor temperature with break out)
	Storage Temperature Range	From - 25 °C to -60 °C	from -25 °C to 60 °C, 90 % RH non-condensing
	Frost Protection	From 4 °C to -14 °C (default 5 °C)	From 4 °C to -14 °C (default 5 °C)
	IP Class	21	21
	Protection Degree	Class II	Class II
	Overvoltage Category	III	III
	Certificate	CE, EAC	CE, EAC
	Cable specification for connectors terminals	max. 1 x 4 mm ² or 2 x 2.5 mm ²	max. 1 x 4 mm ² or 2 x 2.5 mm ²
	Pollution Degree	2 (domestic use)	2 (domestic use)
	Controller Type	1B	1B
	Software Class	A	A
	Regulation type	PWM - Pulse Width Modulation	PWM - Pulse Width Modulation